



雙和校區路線指引

前往公共衛生學院

Route Directions for Shuang-ho Campus,
College of Public Health

公衛學院

112.09.05

雙和校區外觀 Appearance of Shuangho Campus



教學研究大樓

Teaching and Research Building

生醫科技大樓

Biomedical Technology Building

(學院所在位置Here!)



校區地址：235新北市中和區圓通路301號

No.301, Yuantong Rd., Zhonghe Dist., New Taipei City 235, Taiwan

雙和校區各樓層指引



Floor guide for Shuangho Campus



Teaching and Research Building

- 14F~17F Medical Dormitory
- 13F Student Dormitory
- 11F~12F College of Medical Science And Technoligy , Conjoint Laboratory
- 9F~10F College of Medical Science And Technoligy
- 8F Student Laboratory Hall , Conjoint Classroom
- 7F Library , International Conference Hall , Conjoint Classroom , Conference Area
- 6F College of Medical Science And Technoligy , Conjoint Laboratory
- 5F College of Humanities And Social Sciences , Office of Data Science
- 4F Joint Administrative , Office of Data Science
- 3F Office of Information Technology
- 2F Store

8F
1801 classroom
1st~3rd conference

Entrance of Parking Lot

Connected Platform (9F)
Public Walkway (7F~8F)

Square , Connected Platform (4F)

Ladder Square

Shuttle Bus & Bus Stop

Biomedical Technology Building

- 17F Laboratory Animal Center
- 12F~16F Center of Research and Development
- 11F College of Management
- 10F College of Public Health**
- 9F Gym , College of Public Health
- 8F Reserve Space
- 7F International Conference Hall , Conjoint Classroom , Conference Area
- 6F College of Biomedical Engineering
- 5F College of Biomedical Engineering , Bidesign , Student Laboratory
- 4F Business Office , Research Department
- 3F Center of Management and Development , Office of Human Research
- 2F Parking Lot

We are here

7F
9701~9704 classroom
1st~4th conference

Exit of Parking Lot

Yuantong Rd.

To Shuangho Hospital

行人路線指引

Pedestrian Route Directions

訪客

2000
Visitor



行人動線指引-中正路轉圓通路方向

From Zhongzheng Road to Yuantong Road



教學研究大樓

Teaching and Research Building



從中正路轉進圓通路後直行，會先遇到教研大樓(樓下有7-11)，**請繼續直行**
From Zhongzheng Road to Yuantong Road and keep going straight, then will come across the
Teaching and Research Building (with a 7-11 on the ground floor). **Please continue straight.**

Step

1



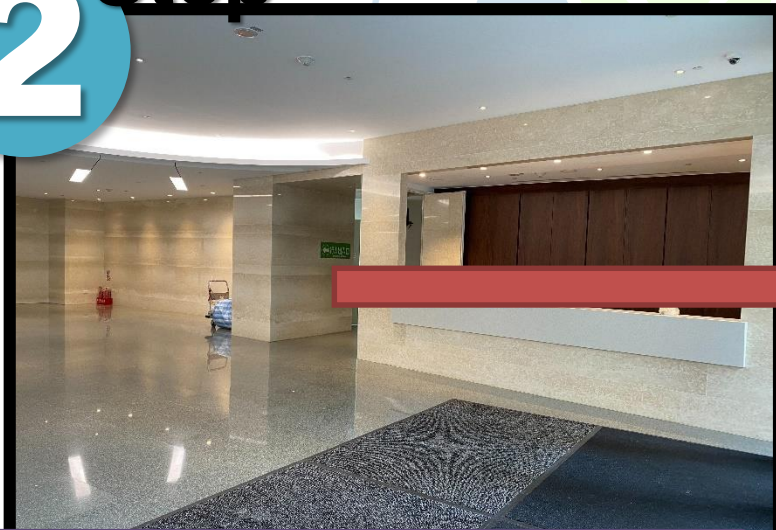
教學研究大樓
Teaching and Research Building

從教學研究大樓進入

Enter from the Teaching and Research Building

2

Step

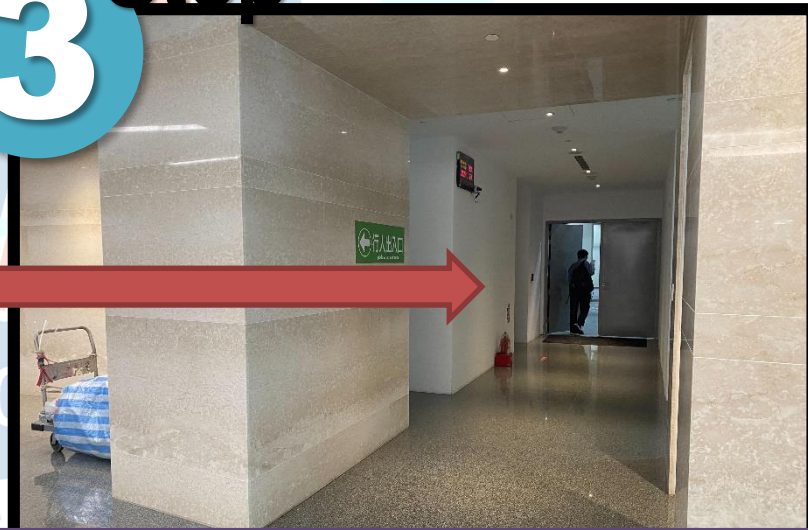


櫃台換識別證

Exchange Identification Card at the Counter

3

Step



從旁邊通道通往生醫科技大樓

Take the side corridor to Biomedical Technology Building

Step
4



經過機車停車場

Pass the parking lot

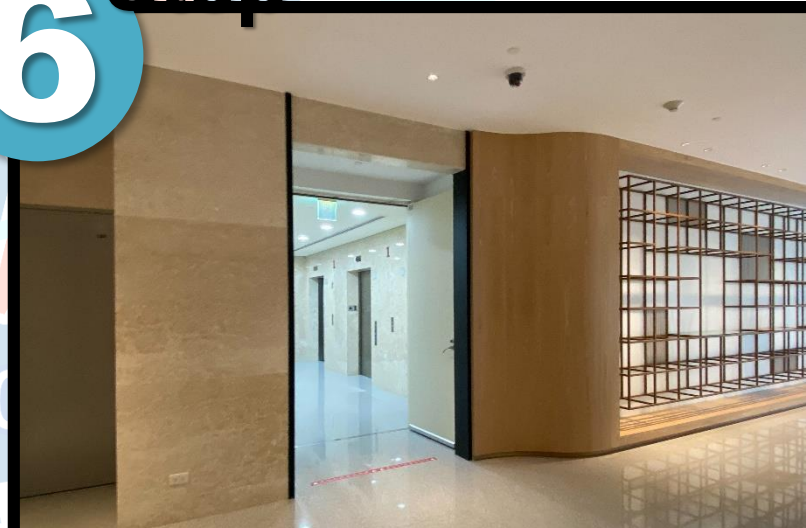
Step
5



至一樓入口

Entrance on the first floor

Step
6



搭乘電梯至10樓公衛學院

Take the elevator to 10F, College of Public Health

汽車路線指引

Car Route Directions

訪客

2000
Visitor



汽車動線指引|Car Route

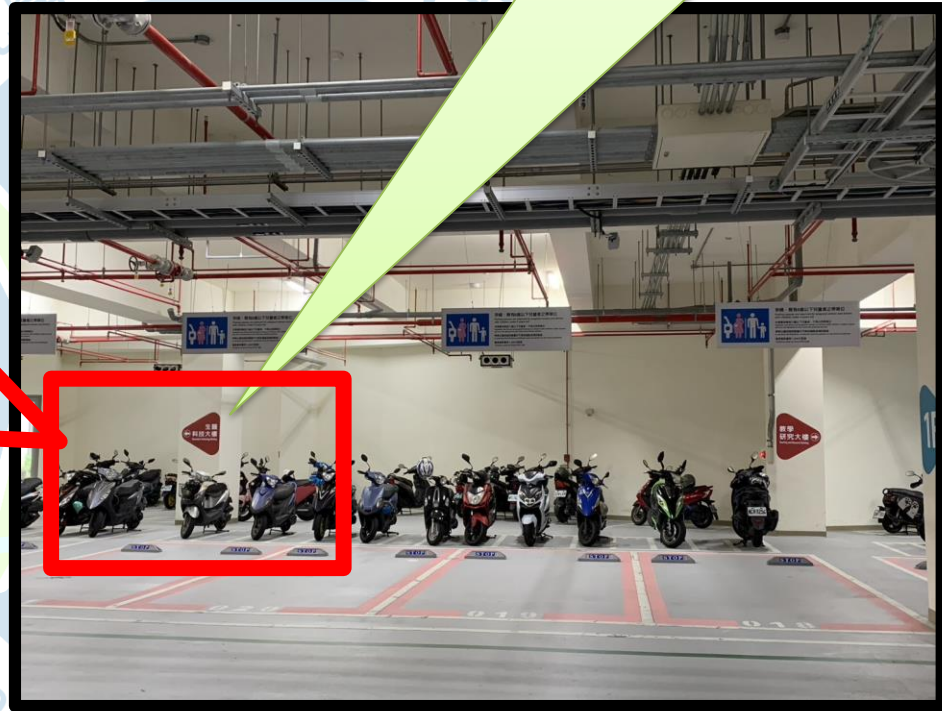


停車場入口
Entrance to the Parking Lot



看到教研大樓的7-11後左轉，即可看到停車場入口
After seeing the 7-11 in the Teaching and Research Building, **turn left** and you will see the entrance to the parking lot.

生醫科技大樓
Biomedical Technology Building
(學院所在位置Here!)



在機車停車位處可看到生醫科技大樓指示牌，搭乘電梯至10樓
You can see the sign for the Biomedical Technology Building in the **motorcycle parking area**. Take the elevator to the 10th floor.



離開時，再煩請前往繳費機繳費
Please pay the fee before you leave.